

# LINDELL AUDIOΩ

ANALOG FEEL IN A DIGITAL WORLD  
7X-500 USER MANUAL

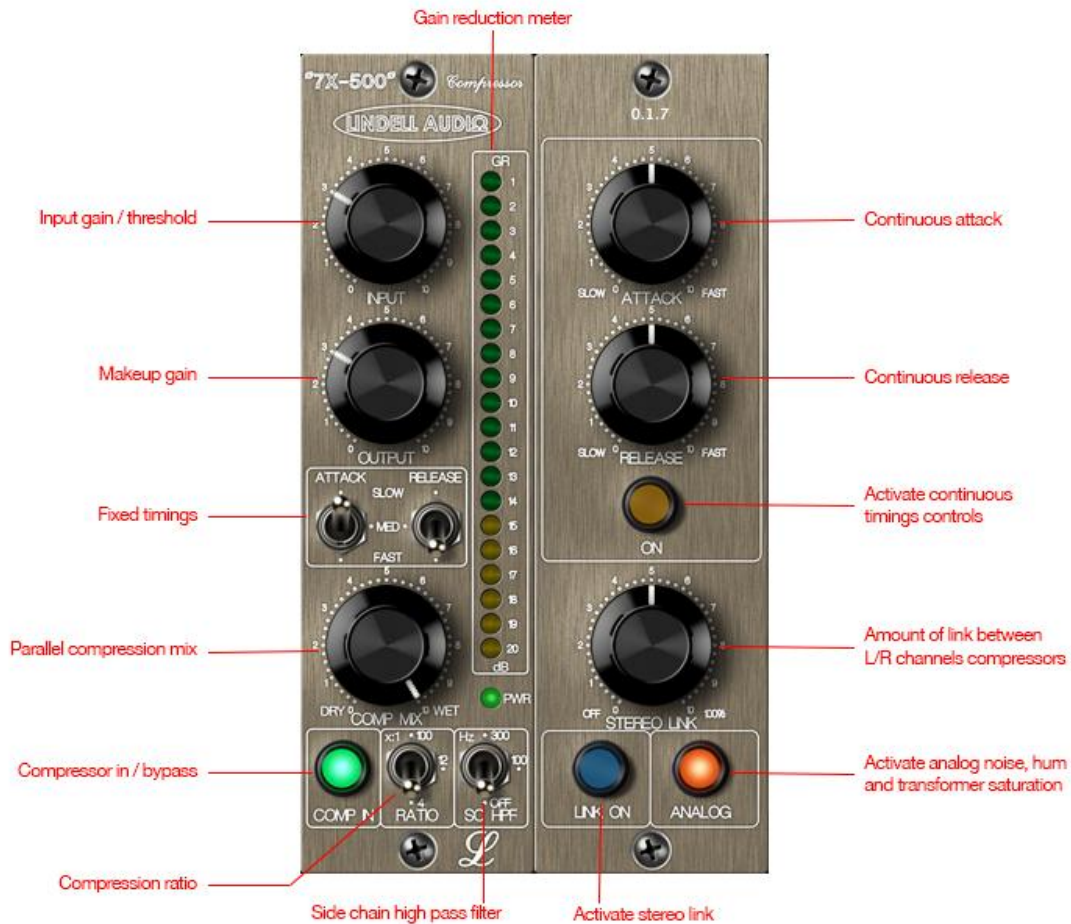


[www.lindellplugins.com](http://www.lindellplugins.com)

Congratulation on purchasing the Lindell audio 7X-500 FET compressor plug-in.

- Faithful hardware circuit emulation of the Lindell audio 7X-500 module
- FET feedback compressor with classic 1176 sound
- Mix control for parallel compression
- 3 step or continuous attack time
- 3 step or continuous release time
- High pass side chain filter
- 3 step ratio: 4:1, 12:1 and 100:1 (all in)
- Transformer balanced output
- Adjustable stereo link
- Analog warmth and non linearities

## Overview



## Input



Input gain. Determines the compression side chain.

## Output



Output gain setting, to compensate the gain reduction (make-up gain).

## Attack



Determines the attack time:

- fast: filters almost all the transients overshoot
- medium
- slow: transients are preserved, percussive effect

## Release



Determines the recovery time after compression:

- fast
- medium
- slow

## Compression Mix



Used for parallel compression. You can mix the compressed signal (wet) with the original direct signal (dry).

## Compressor In



Activate or bypass 7X-500.

## Ratio



Compression ratio of the signal above the compression threshold.

## Side Chain High Pass Filter



Filters the signal on which the amount of compression is computed (side chain). This can avoid too much pumping on the low frequency (kick).

- Off: no filtering
- 100: 100 Hz high pass filter
- 300: 300 Hz high pass filter

### Continuous Timings On



Activates continuous compression timings controls instead of the fixed 3 position attack and release switches.

### Continuous Attack



### Continuous Release



### Stereo Link On



Activates stereo link parameter. When it is off, the left and right channels are independent (equivalent to stereo link = 0%).

### Stereo Link



Controls how the left and right side chain signals are blended together before compression. At 100%, the side chain signal is the same for the left and right channels, and is the average of the two channels.

## Analog On



Activates analog emulation elements such as:

- Output transformer emulation and saturation
- Noise
- Power supply unit hum

This lets you choose between a very clean and neutral circuit or an analog warm circuit.

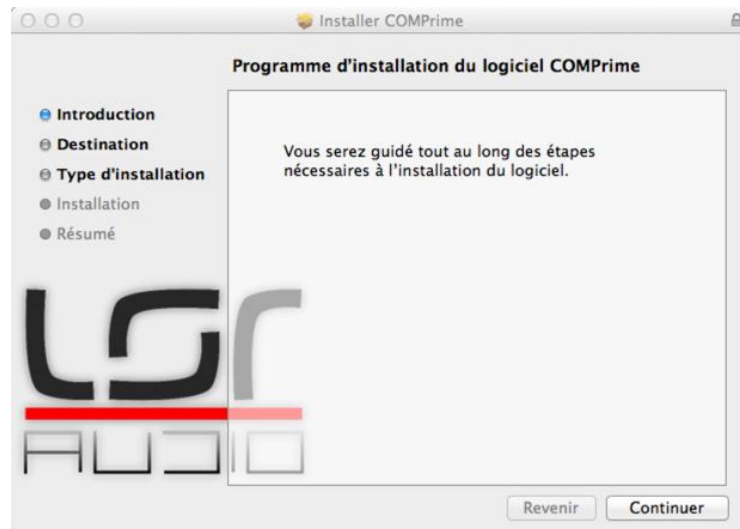
## GR meter



Displays the real time amount of gain reduction, in negative decibels. This meter is not affected by the COMP MIX control and displays the gain reduction in the WET path.

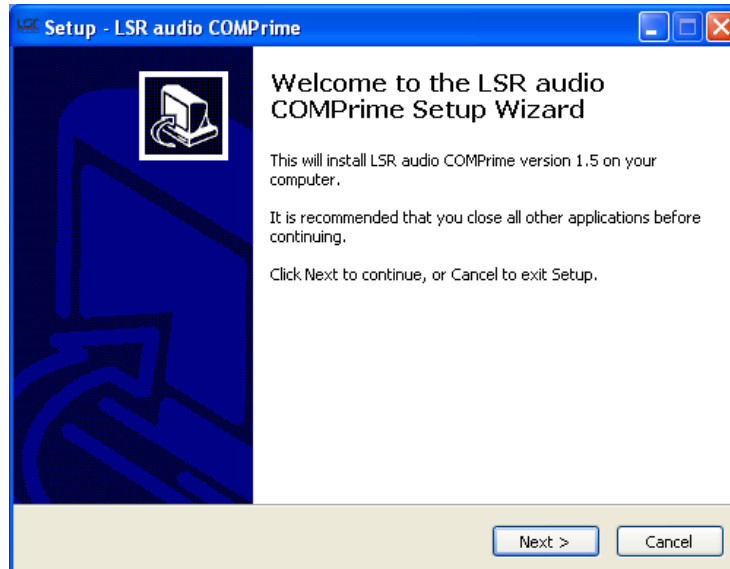
## Installation

### OSX



Open the “Lindell 7X-500.pkg” file and follow the instructions. Select “custom install” at third step if you want to choose the plug-in formats that will be installed.

### Windows



7X-500 User Guide

Execute the "Lindell 7X-500.exe" file, and follow the instructions.



## Company



"Lindell Audio" was started 2010 by record producer Tobias Lindell. Resident producer at Bohus Sound Studios. <http://bohussound.com/> . He set out to design recording equipment to satisfy his own way of working. Developing functions and user interface that didn't exist on the market.

Our goal as a gear manufacturer is simple; Produce recording equipment, designed by engineers for engineers. Our level of details and quality is just top notch...

## Credits

Concept and Design: Tobias Lindell

Algorithms, Design and GUI: Emmanuel Dubecq. LSR audio

[www.lindellplugins.com](http://www.lindellplugins.com)