

# LINDELL AUDIOΩ

ANALOG FEEL IN A DIGITAL WORLD  
PEX-500 USER MANUAL



[www.lindellplugins.com](http://www.lindellplugins.com)

Congratulation on purchasing the Lindell audio PEX-500 equalizer plug-in.

- Faithful hardware circuit emulation of the Lindell Audio PEX-500 module
- Pultec Style Equalizer
- Passive Eq design with a hybrid opamp gain make up circuit
- Transformer balanced input and output
- Analog warmth and non linearities

## Overview



### High attenuation



Controls a high shelf attenuation.

### High attenuation frequency



Three values are available :

- 10 kHz
- 15 kHz
- 20 kHz

### High boost



Controls the gain of the high boost bell.

### High boost frequency



Controls the high boost bell frequency. Note that the “KCS” is equivalent to kHz.

### High boost bandwidth



Controls the high boost bell bandwidth.

### Low boost



Low shelf boost.

### Low attenuation



Low shelf attenuation.

### Low frequency



The same frequency switch controls the low boost and the low attenuation. When used together, the boost and attenuation don't cancel each other but creates a unique curve often used on kick drums or bass.

## Mid / Side mode



Mid / side mode enables to equalize differently the part of the signal that is localized in the center of the stereo and the part on the sides.

Three values are available :

- Off: turns mid / side mode off.
- Mid: mid / side mode is on and the panel controls the middle equalization.
- Side: mid / side mode is on and the panel controls the sides equalization.

## Input pad



Attenuates the signal that enters in the equalizer. Use it to compensate high or low boost.

## Analog On



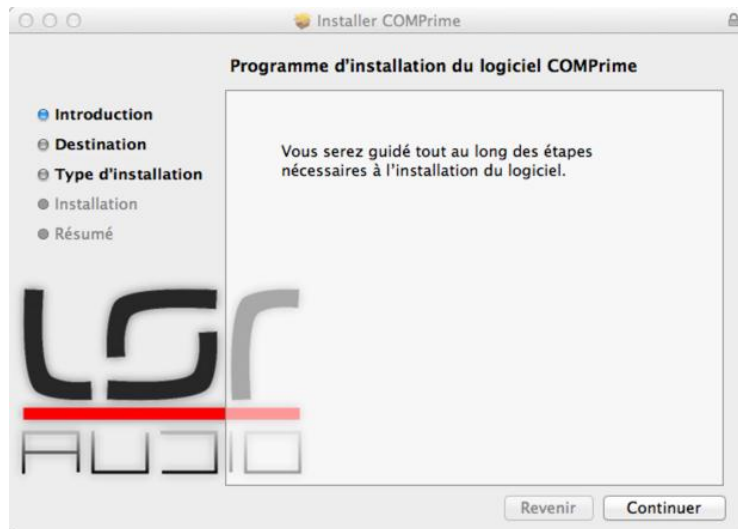
Activates analog emulation elements such as:

- Output transformer emulation and saturation
- Noise
- Power supply unit hum

This lets you choose between a very clean and neutral circuit or an analog warm circuit.

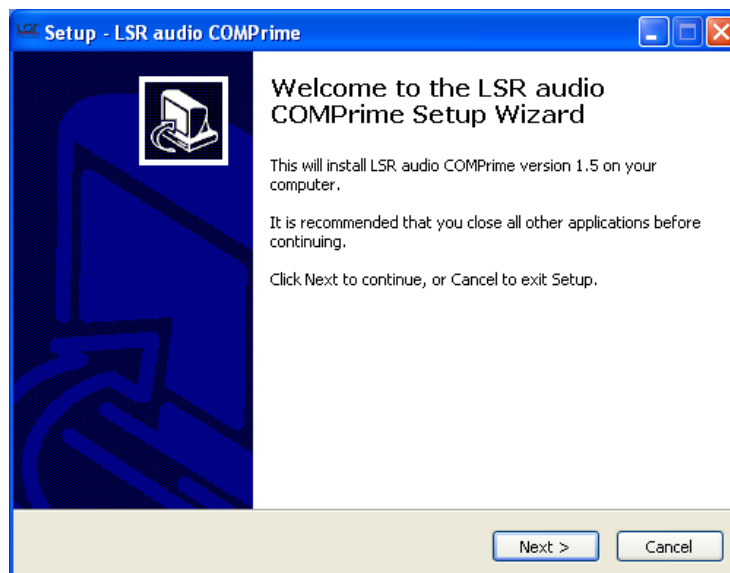
## Installation

### OSX



Open the “Lindell PEX-500.pkg” file and follow the instructions. Select “custom install” at third step if you want to choose the plug-in formats that will be installed.

### Windows



## PEX-500 User Guide

Execute the “Lindell PEX-500.exe” file, and follow the instructions.

VST 32 bit and 64 bit will be installed in the same folder, in a package named “Lindell PEX-500.vst”. This package is organised like this:

- + Lindell PEX-500.vst
  - + Contents
    - + Resources
    - + Win32
    - + x64

## Company



"Lindell Audio" was started 2010 by record producer Tobias Lindell. Resident producer at Bohus Sound Studios. <http://bohussound.com/>. He set out to design recording equipment to satisfy his own way of working. Developing functions and user interface that didn't exist on the market.

Our goal as a gear manufacturer is simple; Produce recording equipment, designed by engineers for engineers. Our level of details and quality is just top notch...

## Credits

Concept and Design: Tobias Lindell

Algorithms, Design and GUI: Emmanuel Dubecq, LSR audio

[www.lindellplugins.com](http://www.lindellplugins.com)